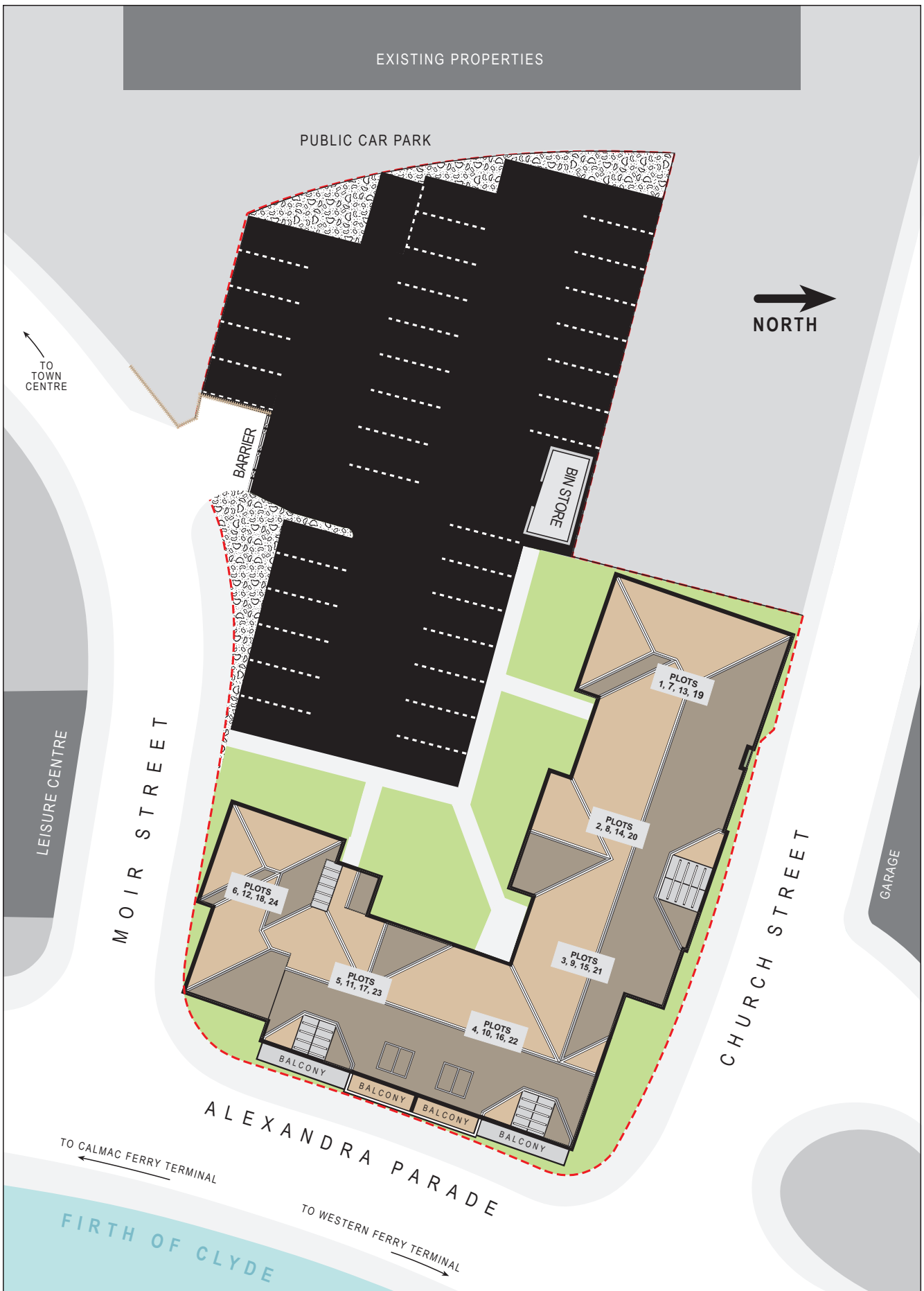


Cloch View DUNOON

Site Plan



The artist's impression of the site plan is drawn from architect's plans to show the relative positions of individual properties and is not to scale. This is a two-dimensional drawing and will not show land contours and gradients, boundary treatments, landscaping or Local Authority lighting. For details of individual properties and availability please refer to our Sales Consultants.

Specification

GENERAL ITEMS

- TV aerial sockets in lounge and main bedroom
- BT socket in lounge and main bedroom and study
- Video door entry system
- Smoke detector
- Window locks to all windows except escape windows
- High security locks
- Double glazed windows
- Zurich ten year warranty
- Ideal Logic Combi Boilers providing Gas Central Heating throughout
- Thermostatically controlled radiators
- Wardrobes in master bedroom
- All internal walls painted magnolia
- Moulded coving to hall, lounge, dining and bedrooms
- Private parking with barrier entrance
- Private balconies to selected plots

BATHROOMS, EN-SUITES AND CLOAKROOMS

- Electric shower, stone shower tray and enclosure (en-suite only)
- Chrome mixer taps
- Shower mixer tap on bath
- Choice of ceramic wall tiles (subject to build programme)

KITCHEN AND UTILITY AREAS

- Choice of kitchen units and worktops (subject to build programme)
- Fully integrated kitchen appliances
- Stainless Steel electric single fan oven
- Integrated extractor hood
- 4 ring gas hob
- Integrated washer/drier
- Stainless Steel sink and monobloc taps
- Integrated dishwasher
- Fitted fridge/freezer
- Choice of tiled splashbacks (subject to build programme)

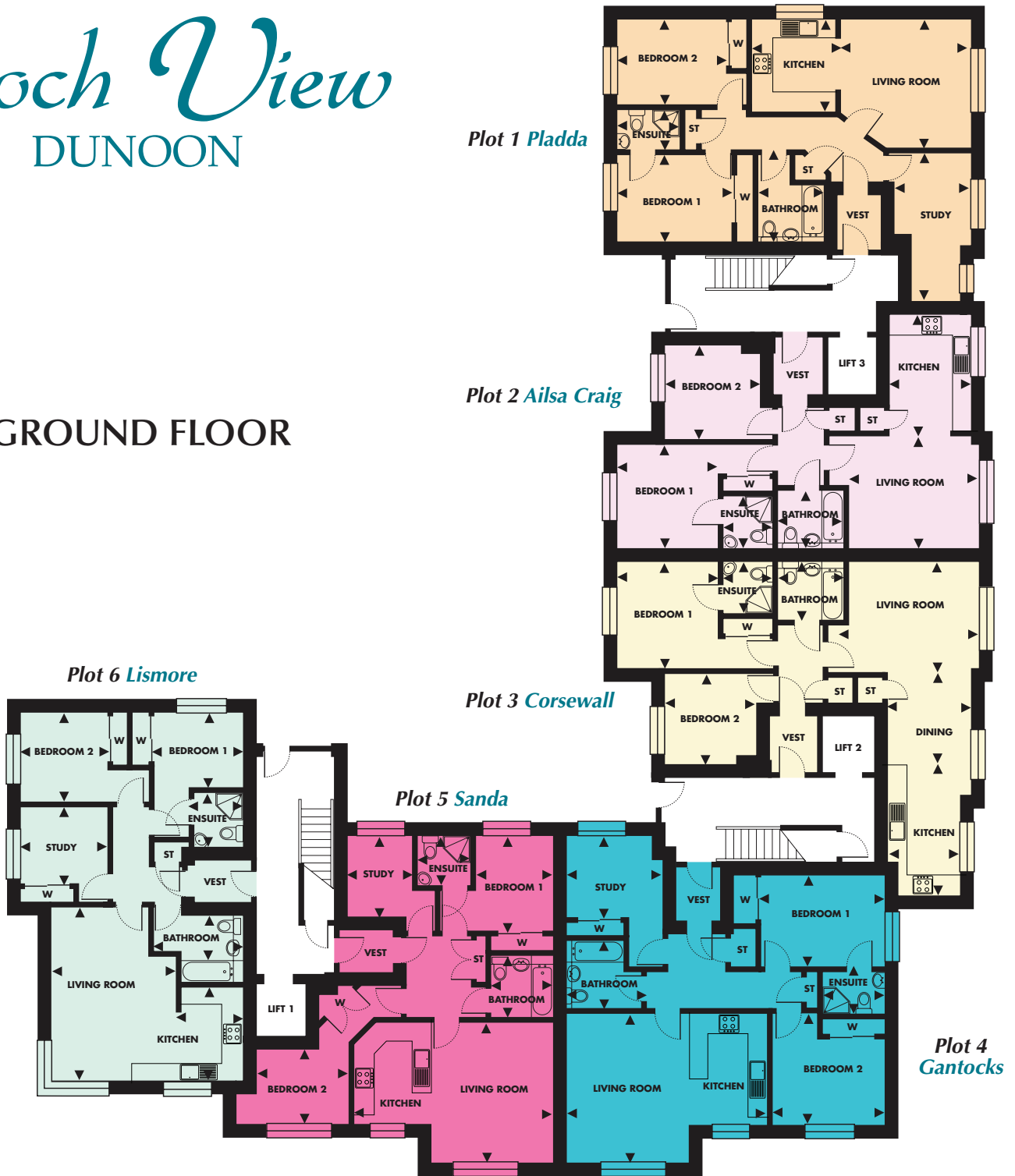


Cloch View DUNOON

Cloch View

DUNOON

GROUND FLOOR



Plot 1 Pladda

	Metric	Imperial
Living Room	4.4 x 4.2	14'4" x 13'8"
Kitchen	3.0 x 2.7	9'8" x 8'9"
Bedroom 1	3.8 x 2.8	12'5" x 9'2"
En-suite	2.1 x 1.4	6'9" x 4'6"
Bedroom 2	3.6 x 2.9	11'8" x 9'5"
Study	4.8 x 2.9	15'7" x 9'5"
Bathroom	2.2 x 2.0	7'2" x 6'6"

Plot 2 Ailsa Craig

	Metric	Imperial
Living Room	4.2 x 3.7	13'8" x 12'1"
Kitchen	3.9 x 2.6	12'8" x 8'5"
Bedroom 1	5.2 x 3.5	17'1" x 11'5"
En-suite	1.8 x 1.6	5'9" x 5'2"
Bedroom 2	3.1 x 3.1	10'2" x 10'2"
Bathroom	2.2 x 2.0	7'2" x 6'6"

Plot 3 Corsewall

	Metric	Imperial
Living Room	4.2 x 3.7	13'8" x 12'1"
Dining Room	4.0 x 2.7	13'1" x 8'9"
Kitchen	3.2 x 2.3	10'5" x 7'5"
Bathroom	2.2 x 2.0	7'2" x 6'6"
Bedroom 1	5.2 x 3.5	17'1" x 11'5"
En-suite	1.8 x 1.6	5'9" x 5'2"
Bedroom 2	3.1 x 3.0	10'2" x 9'8"

Plot 4 Gantocks

	Metric	Imperial
Living/Kitchen	6.6 x 4.9	21'7" x 16'1"
Bedroom 1	4.0 x 3.0	13'1" x 9'8"
En-suite	2.1 x 1.4	6'9" x 4'6"
Bedroom 2	3.6 x 3.6	11'8" x 11'8"
Study	3.2 x 2.6	10'5" x 8'5"
Bathroom	2.2 x 2.0	7'2" x 6'6"

Plot 5 Sanda

	Metric	Imperial
Living/Kitchen	6.6 x 4.6	21'7" x 15'1"
Bedroom 1	3.0 x 2.6	9'8" x 8'5"
En-suite	1.8 x 1.6	5'9" x 5'2"
Bedroom 2	3.2 x 2.6	10'5" x 8'5"
Study	2.6 x 2.2	8'5" x 7'2"
Bathroom	2.2 x 2.0	7'2" x 6'6"

Plot 6 Lismore

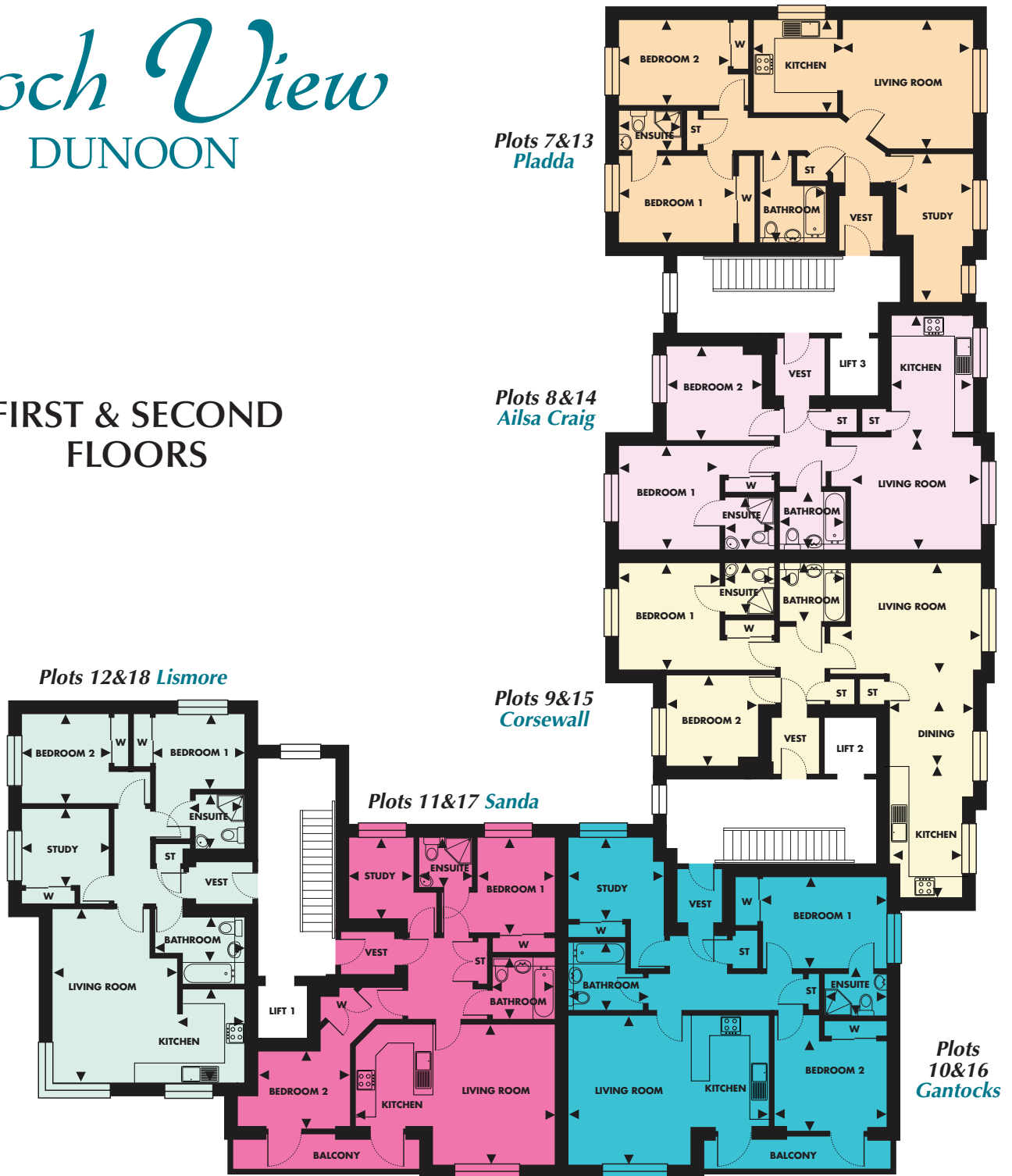
	Metric	Imperial
Living Room	5.6 x 4.1	18'4" x 13'5"
Kitchen	3.1 x 2.0	11'2" x 6'6"
Bedroom 1	2.9 x 2.5	9'5" x 8'2"
En-suite	1.8 x 1.6	5'9" x 5'2"
Bedroom 2	3.0 x 2.9	9'8" x 9'5"
Study	3.1 x 2.9	10'2" x 9'5"
Bathroom	2.2 x 2.0	7'2" x 6'6"

Note: Measurements or dimensions given are accurate to within + or - 50mm and are taken at the widest point of the room and should not be used for calculating carpet sizes or appliance and furniture requirements. This property may also be built handed left or right as a mirror image of these plans. Floor plans are not to scale. This information does not constitute a contract or a warranty.

Cloch View

DUNOON

FIRST & SECOND FLOORS



Plots 7&13 Pladda

	Metric	Imperial
Living Room	4.4 x 4.2	14'4" x 13'8"
Kitchen	3.0 x 2.7	9'8" x 8'9"
Bedroom 1	3.8 x 2.8	12'5" x 9'2"
En-suite	2.1 x 1.4	6'9" x 4'6"
Bedroom 2	3.6 x 2.9	11'8" x 9'5"
Study	4.8 x 2.9	15'7" x 9'5"
Bathroom	2.2 x 2.0	7'2" x 6'6"

Plots 8&14 Ailsa Craig

	Metric	Imperial
Living Room	4.2 x 3.7	13'8" x 12'1"
Kitchen	3.9 x 2.6	12'8" x 8'5"
Bedroom 1	5.2 x 3.5	17'1" x 11'5"
En-suite	1.8 x 1.6	5'9" x 5'2"
Bedroom 2	3.1 x 3.1	10'2" x 10'2"
Bathroom	2.2 x 2.0	7'2" x 6'6"

Plots 9&15 Corsewall

	Metric	Imperial
Living Room	4.2 x 3.7	13'8" x 12'1"
Dining Room	4.0 x 2.7	13'1" x 8'9"
Kitchen	3.2 x 2.3	10'5" x 7'5"
Bathroom	2.2 x 2.0	7'2" x 6'6"
Bedroom 1	5.2 x 3.5	17'1" x 11'5"
En-suite	1.8 x 1.6	5'9" x 5'2"
Bedroom 2	3.1 x 3.0	10'2" x 9'8"

Plots 10&16 Gantocks

	Metric	Imperial
Living/Kitchen	6.6 x 4.9	21'7" x 16'1"
Bedroom 1	4.0 x 3.0	13'1" x 9'8"
En-suite	2.1 x 1.4	6'9" x 4'6"
Bedroom 2	3.6 x 3.6	11'8" x 11'8"
Study	3.2 x 2.6	10'5" x 8'5"
Bathroom	2.2 x 2.0	7'2" x 6'6"

Plots 11&17 Sanda

	Metric	Imperial
Living/Kitchen	6.6 x 4.6	21'7" x 15'1"
Bedroom 1	3.0 x 2.6	9'8" x 8'5"
En-suite	1.8 x 1.6	5'9" x 5'2"
Bedroom 2	3.2 x 2.6	10'5" x 8'5"
Study	2.6 x 2.2	8'5" x 7'2"
Bathroom	2.2 x 2.0	7'2" x 6'6"

Plots 12&18 Lismore

	Metric	Imperial
Living Room	5.6 x 4.1	18'4" x 13'5"
Kitchen	3.1 x 2.0	11'2" x 6'6"
Bedroom 1	2.9 x 2.5	9'5" x 8'2"
En-suite	1.8 x 1.6	5'9" x 5'2"
Bedroom 2	3.0 x 2.9	9'8" x 9'5"
Study	3.1 x 2.9	10'2" x 9'5"
Bathroom	2.2 x 2.0	7'2" x 6'6"

Cloch View

DUNOON

THIRD FLOOR APARTMENTS



Plot 19 Pladda

	Metric	Imperial
Living Room	4.4 x 4.2	14'4" x 13'8"
Kitchen	3.0 x 2.7	9'8" x 8'9"
Bedroom 1	3.8 x 2.8	12'5" x 9'2"
En-suite	2.1 x 1.4	6'9" x 4'6"
Bedroom 2	3.6 x 2.9	11'8" x 9'5"
Study	4.8 x 2.9	15'7" x 9'5"
Bathroom	2.2 x 2.0	7'2" x 6'6"

Plot 20 Ailsa Craig

	Metric	Imperial
Living Room	4.2 x 3.7	13'8" x 12'1"
Kitchen	3.9 x 2.6	12'8" x 8'5"
Bedroom 1	5.2 x 3.5	17'1" x 11'5"
En-suite	1.8 x 1.6	5'9" x 5'2"
Bedroom 2	3.1 x 3.1	10'2" x 10'2"
Bathroom	2.2 x 2.0	7'2" x 6'6"

Plot 21 Corsewall

	Metric	Imperial
Living Room	4.2 x 3.7	13'8" x 12'1"
Dining Room	4.0 x 2.7	13'1" x 8'9"
Kitchen	3.2 x 2.3	10'5" x 7'5"
Bathroom	2.2 x 2.0	7'2" x 6'6"
Bedroom 1	5.2 x 3.5	17'1" x 11'5"
En-suite	1.8 x 1.6	5'9" x 5'2"
Bedroom 2	3.1 x 3.0	10'2" x 9'8"

Plot 22 Turnberry

	Metric	Imperial
Living/Dining	6.6 x 3.6	21'7" x 11'8"
Kitchen	3.6 x 2.8	11'8" x 9'2"
Bathroom	2.2 x 2.0	7'2" x 6'6"
Bedroom 1	4.0 x 3.0	13'1" x 9'8"
En-suite	2.1 x 2.0	6'9" x 6'6"
Bedroom 2	3.2 x 2.6	10'5" x 8'5"

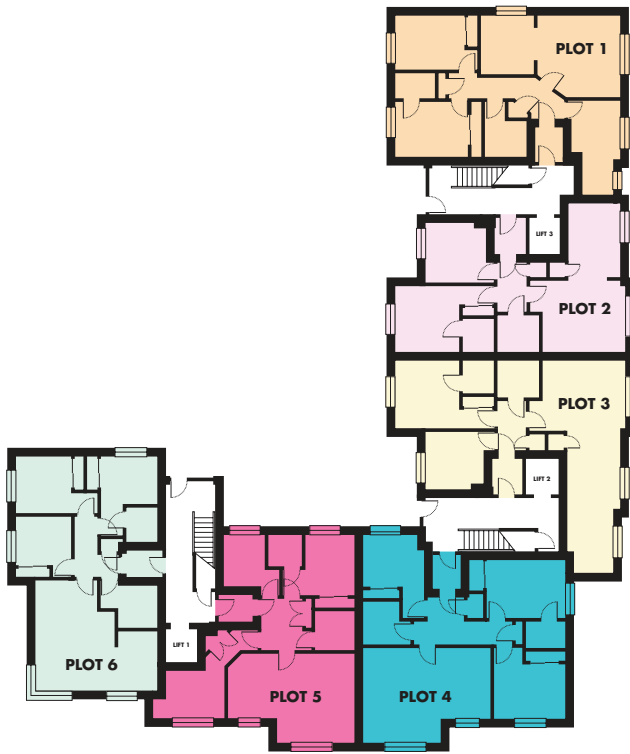
Plot 23 Cloch Point

	Metric	Imperial
Living Room	4.7 x 3.3	15'4" x 10'8"
Kitchen/Dining	5.6 x 3.3	18'4" x 10'8"
Bathroom	2.2 x 2.0	7'2" x 6'6"
Bedroom 1	3.0 x 2.6	9'8" x 8'5"
En-suite	1.8 x 1.6	5'9" x 5'2"
Bedroom 2	2.2 x 2.6	7'2" x 8'5"

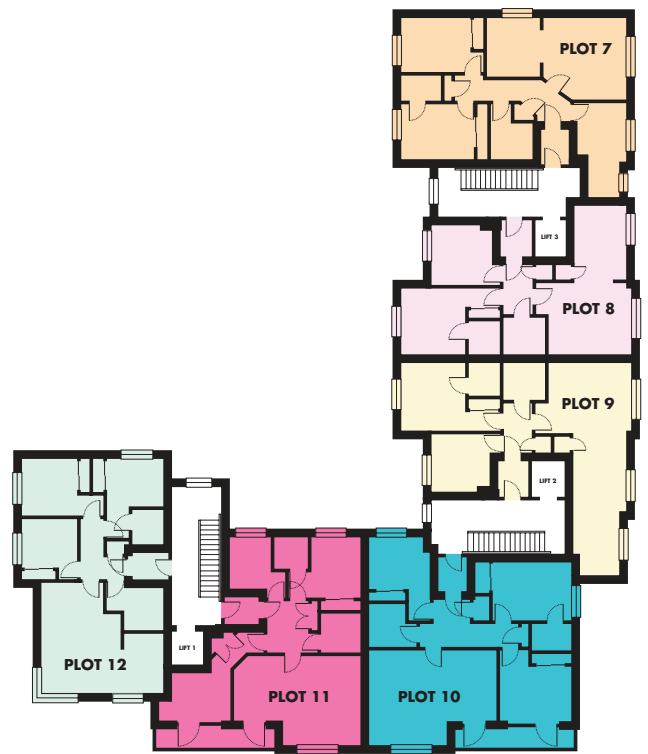
Plot 24 Lismore

	Metric	Imperial
Living Room	5.6 x 4.1	18'4" x 13'5"
Kitchen	3.1 x 2.0	11'2" x 6'6"
Bedroom 1	2.9 x 2.5	9'5" x 8'2"
En-suite	1.8 x 1.6	5'9" x 5'2"
Bedroom 2	3.0 x 2.9	9'8" x 9'5"
Study	3.1 x 2.9	10'2" x 9'5"
Bathroom	2.2 x 2.0	7'2" x 6'6"

Note: Measurements or dimensions given are accurate to within + or - 50mm and are taken at the widest point of the room and should not be used for calculating carpet sizes or appliance and furniture requirements. This property may also be built handed left or right as a mirror image of these plans. Floor plans are not to scale. This information does not constitute a contract or a warranty.



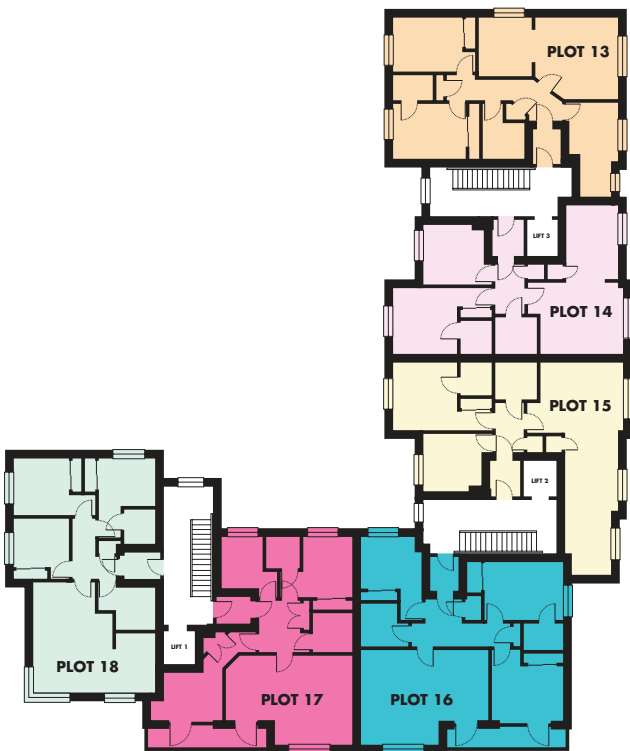
GROUND FLOOR



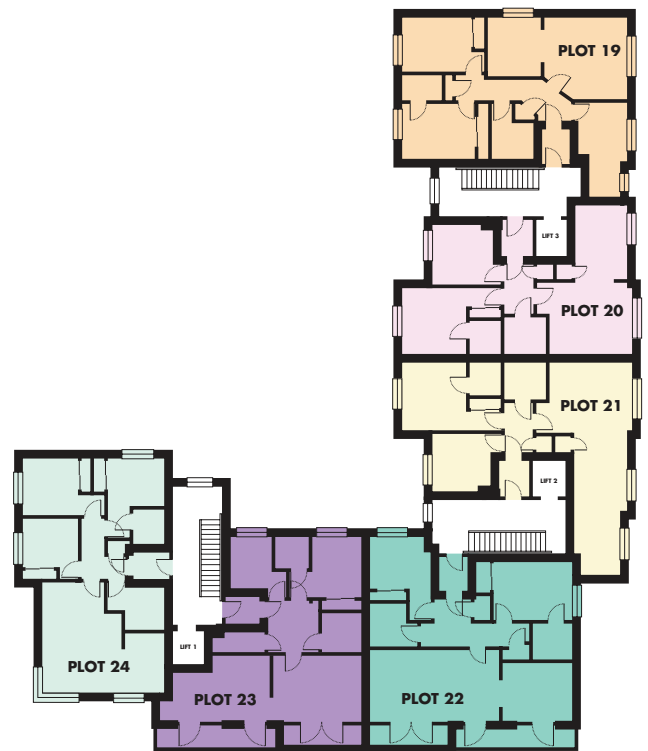
FIRST FLOOR

Cloch View

DUNOON



SECOND FLOOR



THIRD FLOOR

Note: Measurements or dimensions given are accurate to within + or - 50mm and are taken at the widest point of the room and should not be used for calculating carpet sizes or appliance and furniture requirements. This property may also be built handed left or right as a mirror image of these plans. Floor plans are not to scale. This information does not constitute a contract or a warranty.